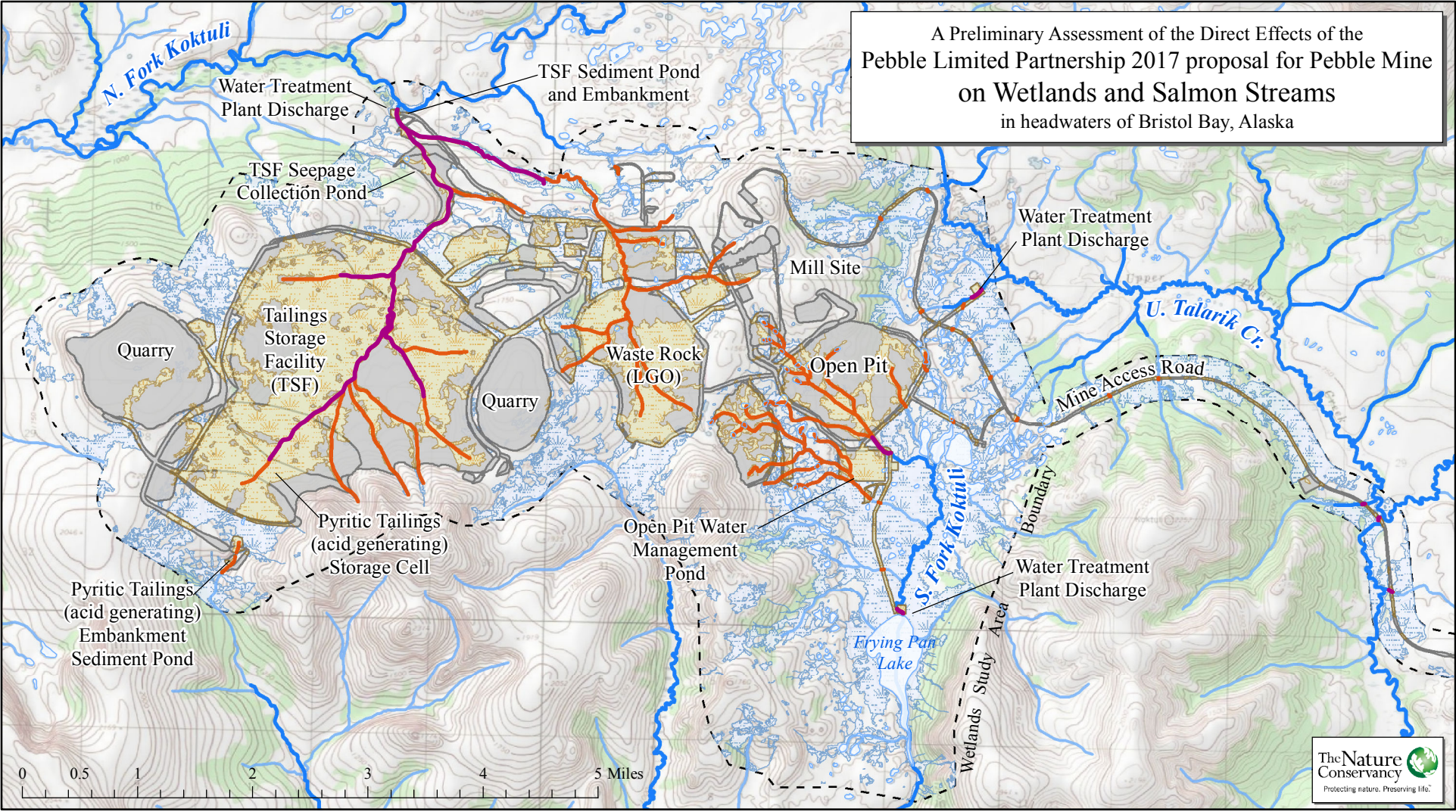


A Preliminary Assessment of the Direct Effects of the
 Pebble Limited Partnership 2017 proposal for Pebble Mine
 on Wetlands and Salmon Streams
 in headwaters of Bristol Bay, Alaska



Assessment of Direct Effects:	Estimated Direct Effects of 2017 Proposal for Pebble Mine*	EPA Proposed Determination for Unacceptable Adverse Effects under Clean Water Act 404(c)	<i>Key to Map Symbols:</i>		
			Direct Effects of Mine Footprint	Other Features	Pebble Mine Proposal
Anadromous Waters Catalog (documented salmon streams)	7.3 miles	5 miles			
Tributaries to Salmon Streams (non-anadromous or not surveyed)	23.5 miles	19 miles			Footprint of Mining and other Facilities
Wetlands (contiguous with salmon or tributary streams)	3,172 acres	1,100 acres			Footprint of Mining and other Facilities

* Includes Mine Site, Transportation Corridor, Pipeline and Port Facility